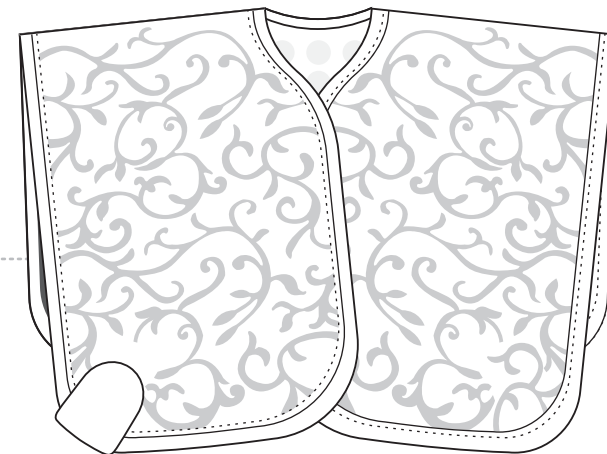


NUGA
www.nuga.kr

CE



MHP-100



User Manual

Thank you for purchasing this product.

Before use...

Please read the cautions for safety in the user manual to use this product safely.

Quality Warranty Enclosed

Tourmanium Product

 **NUGA MEDICAL CO.,LTD.**



185, Jiraeul-ro, Jijeong-myeon, Wonju-si,
Gangwon-do, Korea

TEL : +82-33-730-0001 / FAX : +82-33-730-0007

<http://www.nuga.kr>

ENGLISH / CE H/H / Rev. 08-01
2016.05.17

 **NUGA MEDICAL CO.,LTD.**

Product Introduction

Product Components	8
Names and Functions of Product	9
Descriptions for Controller Buttons	10

How to Use Product

How to Use Product	14
How to Take Emergency Actions during Use	17

Product Storage and Care

How to Store and Clean after Use	20
Self-check Items	21
Before any A/S request	22
Indicator Window for Checking Remote Controller	23
Product Specifications	24
Product Warranty	25

Cautions for your safety

- These cautions include descriptions for the safety of users and prevention of any damage to properties among others.
- Read through the following details to use the product appropriately.
- This Manual classifies the risk level into following three degrees and the following graphical symbols remind users of cautions for matters and operations of concerns about any risk.

Interpretations on symbols



Danger

If there is high possibility of death due to non-compliance.



Warning

If there is a possibility of an injury or death due to non-compliance.



Caution

If there is a possibility of a minor injury or damage to goods due to non-compliance.

Disclaimer

- The manufacturer, importer and/or agent shall not be responsible for any problem and/or other damage to the product which has been caused from the user's fault or operation.
- Information in the user manual has been prepared on the basis of the current product specifications.
- Details in the user manual might be different from those on the product.
- The product manufacturer will be adding and supplementing new functions at any time and new technologies shall be applied to the product continuously in the future as well.
- All the standards and functions are subject to change without any notice to users to improve performance.

! Danger



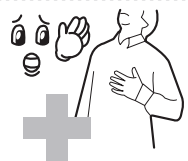
Do not fold the device excessively during use. Make sure it is laid flat or use a cushioning material for storage. (Otherwise, it might cause damage to the product.)



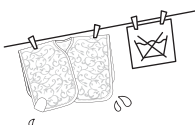
Avoid pulling out the power cord parts or touching the power plug with the wet hands. (Otherwise, it might cause electrical shock or fire.)



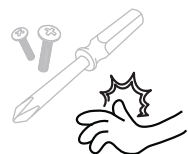
Do not use it for other usages than the described purposes of uses. (Otherwise, it might cause damage to the product.)



Anyone using a cardiac pacemaker should consult with a doctor before any use of this product.

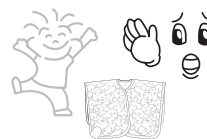


Do not apply washing or dry-cleaning. (Otherwise, it might cause damage to the product or any danger of electric shocks or fire.)



Anyone other than technicians qualified for our company's A/S should not disassemble, repair or modify the product for any reason. (Otherwise, it might cause damage to the product or electric shock and/or fire.)

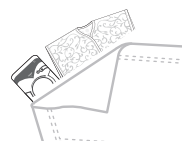
! Warning



Do not allow children use the product alone.



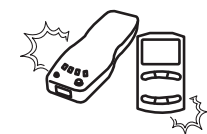
Do not place any heavy object or other electric heater on this product. (Otherwise, it might cause injuries or damage to the product.)



Do not place the controller covered with a blanket during use. (Otherwise, it might cause damage to the product or a danger of fire.)



Avoid bending the power cord excessively or pressing it down with heavy objects.



Never use other temperature controllers with different specifications. (Otherwise, it might cause damage to the product.)



Do not place any inflammable substances such as the candle light, cigarette light and/or wine among others, any vessel containing water, heavy object and other substances. (Otherwise, it might cause fire.)

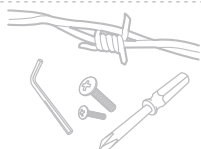
Caution



Please abide by defined time and methods.



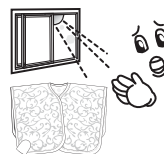
Separate the power cord while the product is not being in use for a long time.



Keep any pin, wire or other metallic pieces from stabbing or inserting to the product.
(Otherwise, it might cause damage to the product.)



Use the product in a proper range of temperature (50~60°C).
(Otherwise, it might cause burns.)

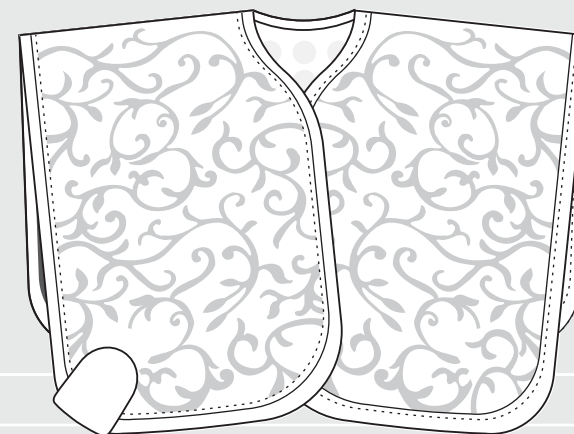


Do not expose the product to the direct sunlight.
(Otherwise, it might cause damage to the product.)



Check out the applied voltage before any use and apply the power plug only to a dedicated socket.

MHP-100



Product Introduction

Product Components	8
Names and Functions of Product	9
Descriptions for Controller Buttons	10

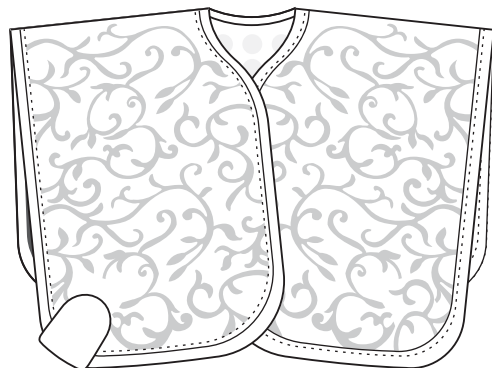
Product Components

i Introduction

Please check out whether all the components are unpacked in hand before installing the product.

Please inquire from of your supplier if there is any missing or damaged component.

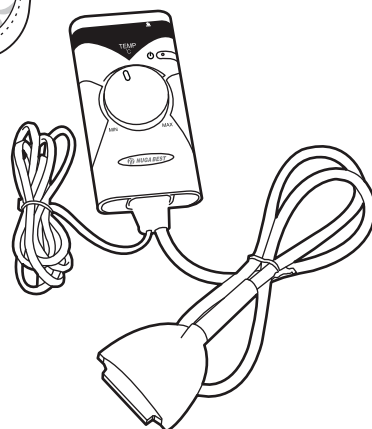
Some specifications and/or designs are subject to change for improving the product performance.



Heater

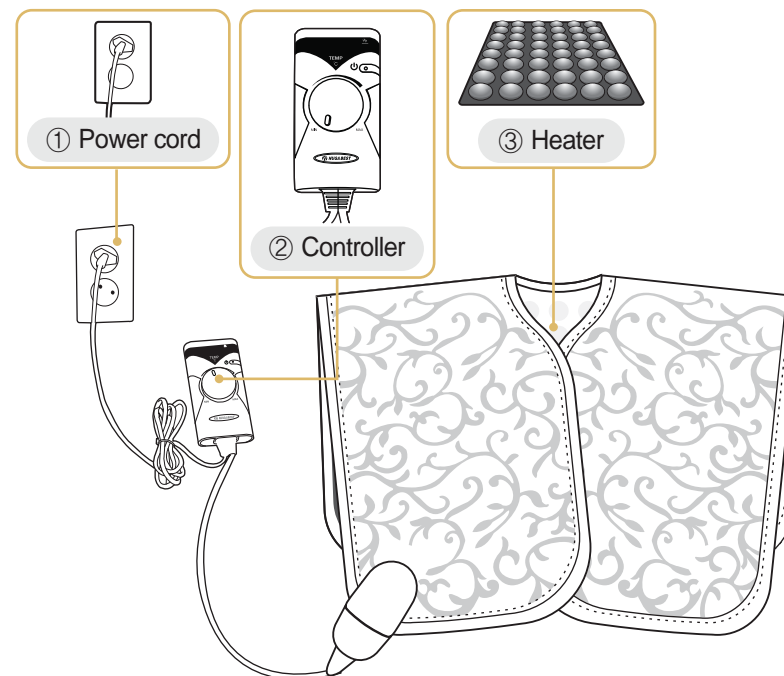


User Manual



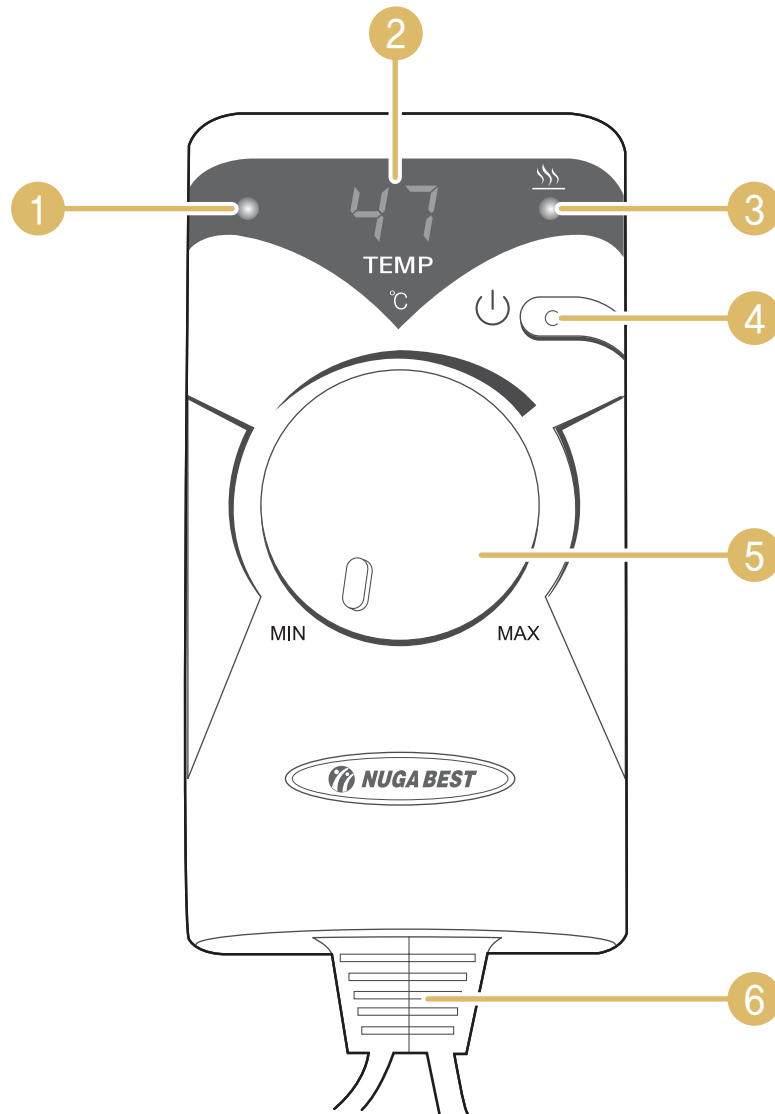
Controller

Names and Functions of Product



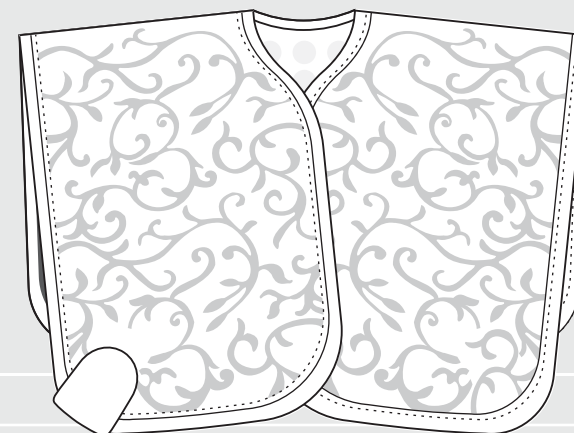
Name	Function
① Power cord	It is connected to an outlet to input the power supply to the product.
② Controller	It can set or select the temperature of the heater.
③ Heater	It has a heating function as the tourmanium is combined to the heater.

Descriptions for Controller Buttons



Name	Function
① Power indicator lamp	Lamp to display turn on/off of the controller
② Temperature indicator window	Window to indicate setting/current temperature of the product
③ Operation indicator lamp	Lamp to indicate the product's operating status
④ Power button	Button to turn on/off the power for the product and controller
⑤ Temperature control dial	Dial to control the product's temperature
⑥ Heater connecting cable	Cable receiving power from the controller and exchanging signal for temperature control

MHP-100



How to Use Product

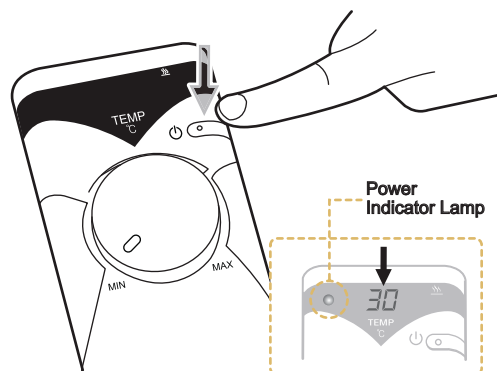
How to Use Product 14

How to Take Emergency Actions during Use
..... 17

How to Use Product

i Before using product

- Do not use it for other usages than the described purposes of uses.
- Do not fold the product in use.
- Check out the voltage in use before any use.
- Anyone using a cardiac pacemaker should consult with a doctor before any use of this product.
- Never use other temperature controllers with different specifications.
- Do not place the controller covered with a blanket during use.
- Use the product in a proper range of temperature.



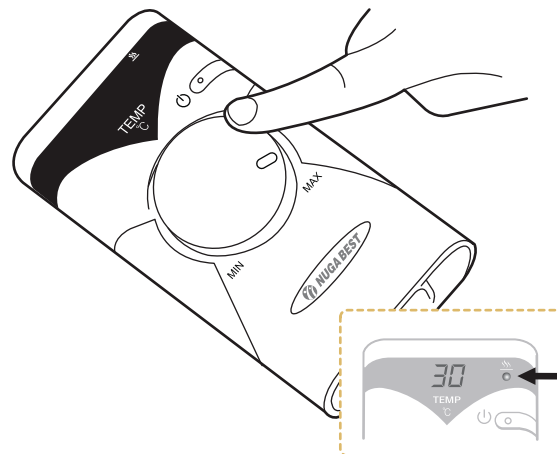
step. 1

Press the power button on the controller to turn on the power supply for the product and controller after connecting the power cord to a socket.

The current temperature is shown on the temperature indicator window.

step. 2

Turn the temperature control dial clockwise on the controller to set the desired temperature. (30~70 °C)

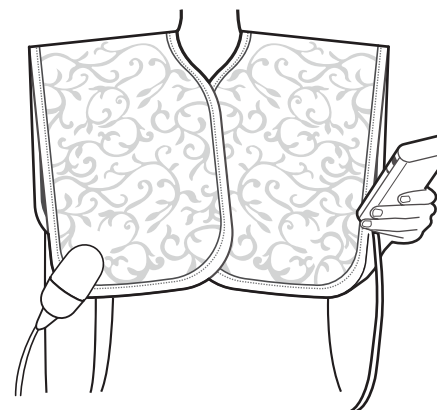


The current temperature is shown on the temperature indicator window after the user's setting temperature is blinking three times.

A light is lit on the operation indicator lamp if the current temperature is higher than the setting temperature.

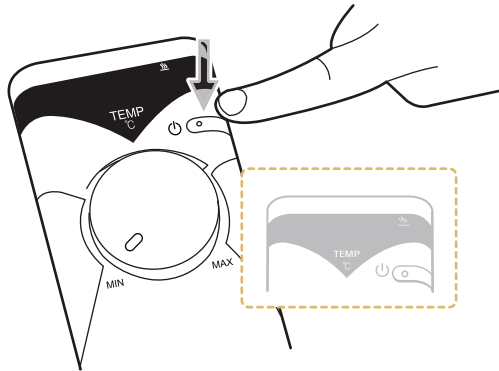
step. 3

Keep the product tightly close to the desired area in the body after setting the temperature.



How to Take Emergency Actions during Use

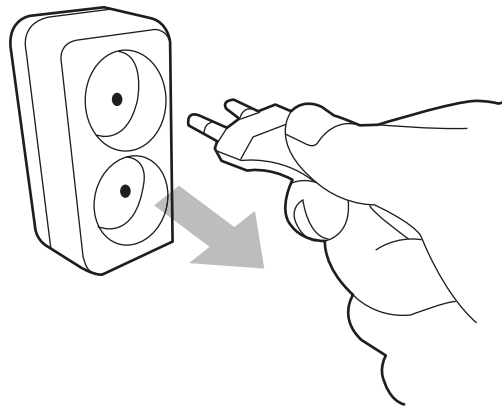
step. 4



Press the power button to turn off the power on the product and controller if you want to stop using the product.

Then, all the lamps on the controller are tuned off.

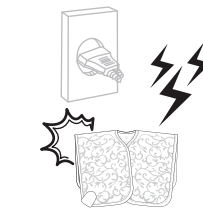
step. 5



Remove the power cord from the socket in any case after using the product.

i Notice

The power supply on the product is automatically turned off after 8 hours.



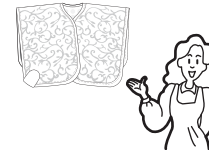
Stop using the product immediately and remove the power plug if there is any lightning.



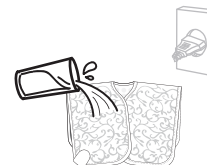
Stop using the product immediately and contact your supplier branch or our company if you smell any burn or detect any smoke from the product.



Stop using the product immediately and consult with a doctor if any abnormality occurs to the human body.

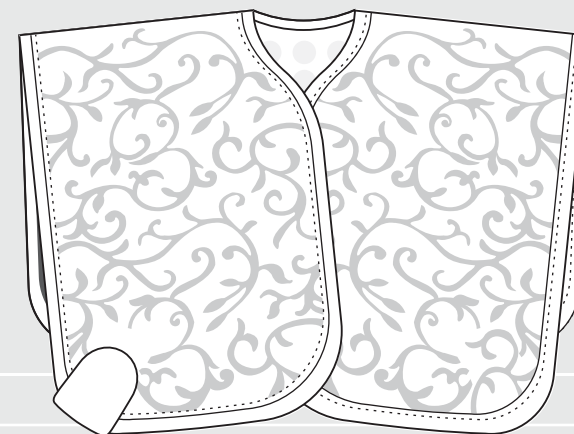


Turn off the power switch immediately, stop using the product and contact our company if you find out any failure or power failure from the product.



Turn off the power switch, remove the power plug immediately, and then contact our company if you have poured water into the product.

MHP-100



Product Storage and Care

How to Store and Clean after Use	20
Self-check Items	21
Before any A/S request	22
Indicator Window for Checking Remote Controller	23
Product Specifications	24
Product Warranty	25

i Introduction

1. Separate the power cord while the product is not in use for a long time.
2. Be aware of the following for the storage place.
 - ① Keep the product in a place with no water.
 - ② Keep the product in a place with no concern of any adverse effect such as the air pressure, temperature, humidity, ventilation, sunlight and/or air containing dust, salt, sulfur, etc.
 - ③ Be careful of safety conditions such as the slope, vibration, shock, etc. (including those during transportation).
 - ④ Do not keep the product in a place near any chemical or gas.
 - ⑤ Avoid any direct sunlight during the storage.
3. Store the product after cleaning the components.

Environmental conditions

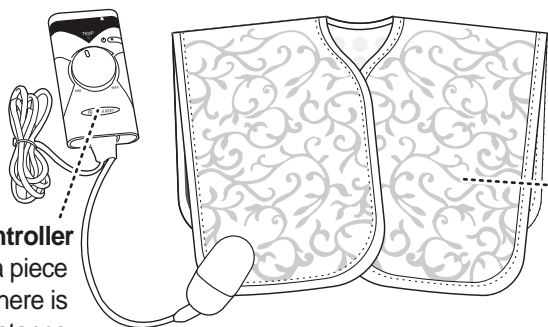
- During operation: temperature (0~35℃), humidity (20~80%)
- Transport and storage conditions: temperature (-25~70℃), humidity (20~80%), atmospheric pressure (700hPa to 1060hPa)

How to clean



Caution

Ensure unplugging of the power plug before cleaning. Otherwise, it might cause electric shocks.



Wipe it out with a piece of dry cloth if there is any foreign substance.

Product top
Wipe it out with wax for leather or dry cloth.



Caution

There might be concerns of injuries or fire if you fail to check out the following. Make sure that you check out the following.

Check before use

- | | | |
|--|---|--|
| 1. Is the power cord connected to an outlet? | Yes <input checked="" type="checkbox"/> | No <input type="checkbox"/> |
| 2. Are lights on the power lamp and operation indicator lamp turned on when the power supply is applied? | Yes <input checked="" type="checkbox"/> | No <input type="checkbox"/> |
| 3. Is the temperature indication displayed on the temperature indicator window on the controller? | Yes <input checked="" type="checkbox"/> | No <input type="checkbox"/> |
| 4. Is the temperature increasing well in the product? | Yes <input checked="" type="checkbox"/> | No <input type="checkbox"/> |
| 5. Is the temperature in the product not too high? | Yes <input type="checkbox"/> | No <input checked="" type="checkbox"/> |
| 6. Did you check out conditions for any damage to the power cord or cable conditions? | Yes <input checked="" type="checkbox"/> | No <input type="checkbox"/> |

Check after use

- | | | |
|---|---|--|
| 1. Is the power supply automatically turned off after 8 hours? | Yes <input checked="" type="checkbox"/> | No <input type="checkbox"/> |
| 2. Is the temperature on the temperature indicator window on the controller turned off? | Yes <input checked="" type="checkbox"/> | No <input type="checkbox"/> |
| 3. Are lights on the power lamp and indicator window turned off? | Yes <input checked="" type="checkbox"/> | No <input type="checkbox"/> |
| 4. Is the power cord removed from the outlet? | Yes <input checked="" type="checkbox"/> | No <input type="checkbox"/> |
| 5. Is the place to keep the product exposed to the humidity dust and/or chemicals? | Yes <input type="checkbox"/> | No <input checked="" type="checkbox"/> |

Before any A/S request



Caution

Ensure checking out the following before applying for A/S if any abnormality occurs in the product.
The product might fail to operate normally even without any failure if you use it with no right understanding on how to use it.

Checklist for any abnormality in the power supply

If there is no power supply on the power lamp;

- ① Check out if the power plug on the controller is connected to an outlet.
- ② Check out if the power button in the controller is pressed to turn on the product.
- ③ Check the operating voltage.

Checklist for any abnormality in the heating

If the temperature is not increasing in the product;

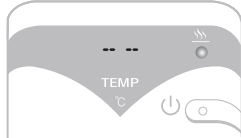
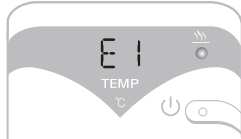
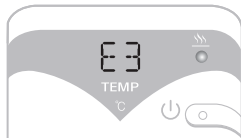
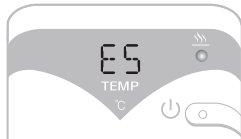
- ① Check out if the power button in the controller is pressed to turn on the product.
- ② Check out if the temperature is set to too weak.
- ③ Do not disassemble the product but contact your supplier or our company.

Indicator Window for Checking Remote Controller




Caution

Do not disassemble the product arbitrarily if any error occurs, but remove the power plug, turn off the power switch, and then contact your supplier.
If you disassemble the product arbitrarily, it might cause serious injuries and/or damage to the product.

Display	Descriptions	Display location
	Disconnection of temperature sensor	Temperature Indicator Window
	Short circuit of temperature sensor	Temperature Indicator Window
	Overheating in heating material	Temperature Indicator Window
	Overheating in controller	Temperature Indicator Window

Product Specifications

Product name and model name	Thermal massager MHP-100
Manufacturer	NUGA MEDICAL CO.,LTD. 185, Jiraeul-ro, Jijeong-myeon, Wonju-si, Gangwon-do, Korea
Date of manufacture / number of manufacture	Marked on the product
Product weight	3.3 kg
Product size	580 X 760 X 15 (mm)
Cautions during use	Refer to the user manual
Operating method	Refer to the user manual
Electric rating	AC 220–240V~, 50–60Hz
Power consumption	150 W 


Product Warranty

Company	Product name	
	Model name	
	Warranty period	1 year from purchase
	Date of purchase	
Customer	Place of purchase	
	Phone	
	Name of customer	
	Customer number	
	Address	

※ Please keep this warranty carefully. You can receive sufficient service only by presenting this warranty with the place and the date of purchase.
 - NUGA Medical Co., Ltd. provides warranty of this product according to the regulations of the Consumer Protection Act.
 - Contact your local sales retailer or NUGA Medical office when the product is damaged.
 - The spare parts of this product are secured for 3 years after this product is discontinued.
 - You must have the place of purchase written in the warranty at the time of your purchase in order to receive warranty repairs.

- The warranty is valid until 1 year from the date of purchase and only damages caused during normal operation are subject for warranty repairs.
- The warranty period of this product is calculated from the date of purchase, and therefore have the store of purchase record the date of purchase on your warranty when you purchase the product (When the date of purchase cannot be verified, the warranty period is added from the day after 6 months from the date of manufacture).
- When this product is used for commercial purposes (e.g., used for sales, in abnormal environment, etc.) or for industrial purposes, the warranty period is reduced to 6 months. (including essential spare parts)
- This warranty cannot be reissued.

※ Warranty repair is not provided in the following cases.
 - When damage is caused by natural disasters (e.g., fire, earthquake, flood, and wind)
 - When replacing consumptive parts that normally wear from use
 - When damage is caused by an abnormal power source or faults in a connecting unit.
 - Other external reasons other than faults of the product itself.
 - When damage is caused by repairs or modifications done by a person who is not a certified repair personnel of NUGA Medical's local office or service center.


<http://www.nuga.kr>
